

ODA460-30V-MHD

Topcon Technology

DIMENSIONS

1903*1134*30mm

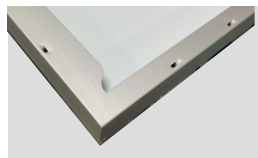
CELL SIZE

182*91mm



JUNCTION BOX

Waterproof protection grade: IP67/IP68
 Safety Level: Class II
 Maximum System Voltage: 1500V
 outstanding waterproof level ·
 Effectively resist harsh environments



Frame

Strong machinical load
 resistance up to 5400Pa
 Anodic oxidation layer resistant to
 chemical corrosion available
 in silver and black



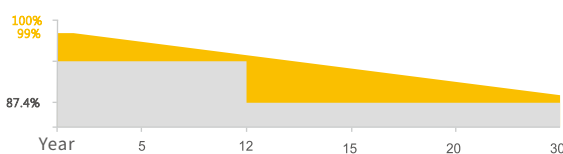
16BB

QUALIFICATIONS AND CERTIFICATES



· IEC61215 / · IEC61730

WARRANTY



12 YEARS

Guarantee on product material and workmanship

30 YEARS

Linear Power output warranty



SMBB Technology

Better light trapping and current collection to improve module power output and reliability.



Higher Power Output

Module power increases 5-25% generally, bringing significantly lower LCOE and higher IRR.



Enhanced Mechanical Load

Certified to withstand: wind load (2400 Pascal) and snow load (5400 Pascal).

NINGBO OSDA SOLAR CO.,LTD
www.osdasol.com

OSDA Solar established in 2008, is a high-tech enterprise integrating R&D, production and sales of solar energy products. It is committed to the overall solution of distributed photovoltaic system and provides services from consulting, design, construction, financing to intelligent operation and maintenance.

OSDA has 3 production sites in China and branches and representative offices in more than 10 countries overseas. Products include solar cells, modules, On/Off grid solar system, solar pump and other solar related applications. Our products have passed many international certifications such as TÜV, MCS, CEC, IEC, ISO, CE, CQC and so on. With excellent quality, our products are exported to more than 100 countries of the world.

Since its establishment, OSDA has always followed the idea of "Smart energy · Lightening future". It has followed the steps of "the Belt and Road Initiative", we bring bright light to the countries and people who are short of electricity. Sharing the concept of modern civilization, and building a green home together.

ELECTRICAL DATA(STC)

Model Type	ODA460-30V-MHD
Peak Power(Pmax)	460.00
Maximum Power Voltage(Vmp)	34.72
Maximum Power Current(Imp)	13.25
Open Circuit Voltage(Voc)	42.05±3%
Short Circuit Current(Isc)	13.99±3%
Module Efficiency(%)	21.32

*STC:irradnace 1000W/m², AM1.5, and cell temperature of 25°C

* Tolerance:Voc±3%;Isc±3%

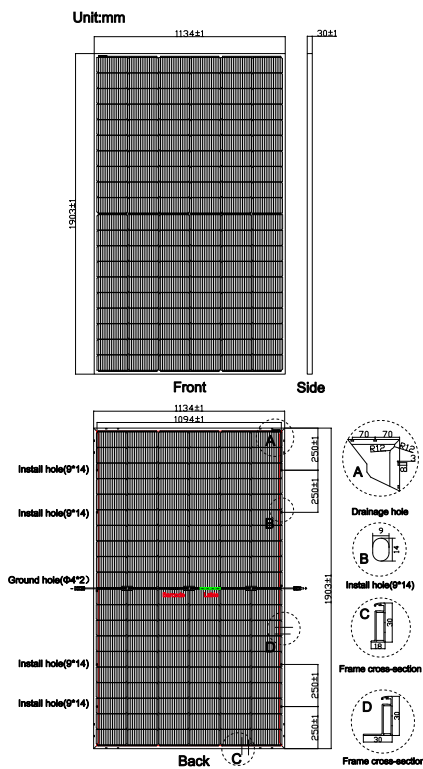
ELECTRICAL DATA(BNPI)

Model Type	ODA460-30V-MHD
Peak Power(Pmax)	510.00
Maximum Power Voltage(Vmp)	34.72
Maximum Power Current(Imp)	14.68
Open Circuit Voltage(Voc)	42.05±3%
Short Circuit Current(Isc)	15.50±3%

*BNPI:back irradsnce 135W/m², AM1.5, and cell temperature of 25°C

* Tolerance:Voc±3%;Isc±3%

PV DRAWINGS



TEMPERATURE & MAXIMUM RATING

Maximum System Voltage (V)	1500 V
Maximum Series Fuse Rating (A)	30 A
Power Tolerance	±3%
Pmax Temperature Coefficients (W/°C)	-0.300 %/°C
Voc Temperature Coefficients (V/°C)	-0.250 %/°C
Isc Temperature Coefficients (A/°C)	+0.046 %/°C
NOCT Nominal Operating Cell Temperature (°C)	45±2 °C
Operating and Storage Temperature (°C)	-40~+85 °C

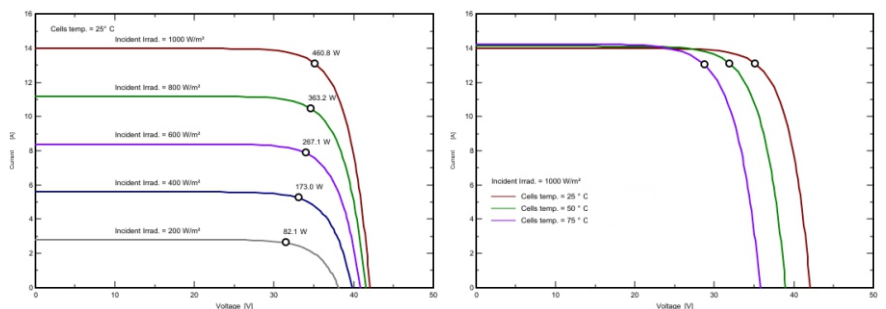
MECHANICAL CHARACTERISRTICS

Cell Type	182*91 N Type Bifacial Mono
No. of Cells	120 (12*10)
Dimensions	1903*1134*30mm
Weight	27.20kg
Front Glass	2.0mm AR coating tempered glass
Back Glass	2.0mm Glazed Glass
Frame	Anodized Aluminium Alloy
Junction box	IP67/IP68 3diodes
Output cables	4mm ² cable 35cm (Inlcuding Hengda PV-ST101 connector)
MaxWind Load/Snow Load	2400Pa/5400Pa
Fire safety class	Class C

PACKING WAY

20FT container	6 Packages/222pcs
40HQ container	24 Packages/888pcs

IV CURVE



We Are Seeking Agents And Partners!

ADD:1-1, No.136, Haichuan Road, Jiangbei Area, Ningbo City, Zhejiang Province, P.R. China

Tel : 86-574-87913266

Call: 86-13566302808

E-mail : sales@osdasol.com

Made in china

The company reserves the right of final interpretation, August 2022 edition

